



BULLET M

Zero-Variable Wireless Infrastructure Deployment

Models: BM2HP, BM5HP

Completely integrated Radio

Directly plugs into any Antenna
that has a Type N female connector

Robust Weatherproof Design



600 mW

HI-POWER

With up to 600mW of power and enhanced receiver design, the Bullet M is ideal for long-distance links.



50+ km

LONG RANGE

The device was specifically designed for outdoor PTP bridging and PTMP airMAX base-station applications.

100 Mbps+

real throughput

Breakthrough speed 100+ Mbps real TCP/IP throughput.



**+/- 15kV RF & Ethernet
ESD Protection**

+/- 15kV radio frequency and ethernet electrostatic discharge (ESD) protection.

BULLET M

UBNTShop.com.au

Shop Online: www.ubntshop.com.au

Shopfront: 603 Flinders Street Townsville Qld 4810

Email: sales@ubntshop.com.au

 **1300 762 568**

Overview

Revolutionary Design

Bullet M is the latest version of the popular Ubiquiti Bullet. Like its predecessor, Bullet M is a wireless radio with an integrated Type N RF connector that can be directly plugged in to any Antenna* to create a powerful and robust outdoor Access Point, Client, or Bridge.

The Bullet M features a signal strength LED meter for antenna alignment, a low-loss integrated N-type RF connector, and a robust weatherproof design.

With up to 600mW of power and enhanced receiver design, the Bullet M is ideal for long-distance links, capable of 100Mbps+ real TCP/IP speeds over multi-km distances.



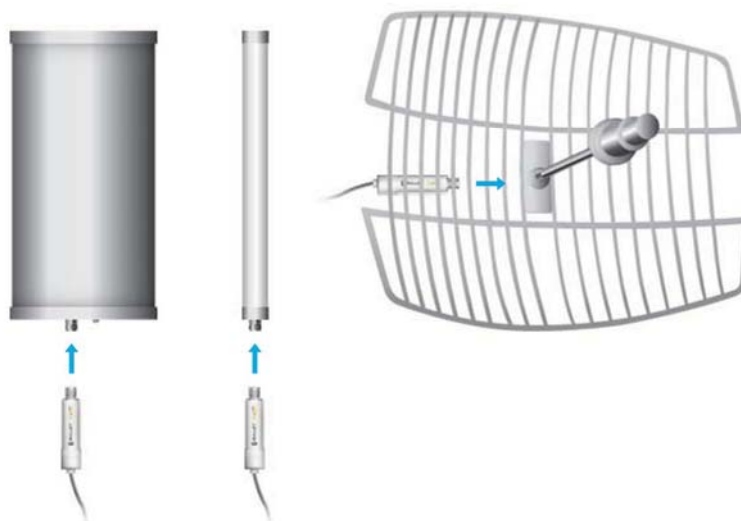
Zero Variable Deployment

Bullet M eliminates the need to use RF cables and requires no special antenna or tools to install. No radio card / host board issues. No RF cable quality concerns. No mechanical stability concerns. No enclosure mounting requirements. With the Bullet M, operators can just plug and go.

Integrated AirMax Technology

The Bullet M can instantly become a powerful TDMA BaseStation utilizing Ubiquiti's breakthrough AirMax technology. With AirMax, PtMP networks can scale gracefully while maintaining high throughput and low latency performance.

Usage Example



Sector Antennas, Omni Antennas, Dish Antennas, etc.; any Antenna can easily be transformed into a powerful and robust outdoor Access Point, Client, or Bridge by simply plugging in Bullet M.*

* Bullet M HP works with any antenna with a Type N female connector

** Ethernet cable and POE Adapter sold separately